

CONTENTS

SHEET 1: BASIC INFO
SHEET 2: BILL OF MATERIALS
SHEET 3-6: ATTACHMENT TO POST
SHEET 4: IN GROUND MOUNT
SHEET 5: SURFACE MOUNT
SHEET 6: PORTABLE MOUNT

INSTRUMENT INFO

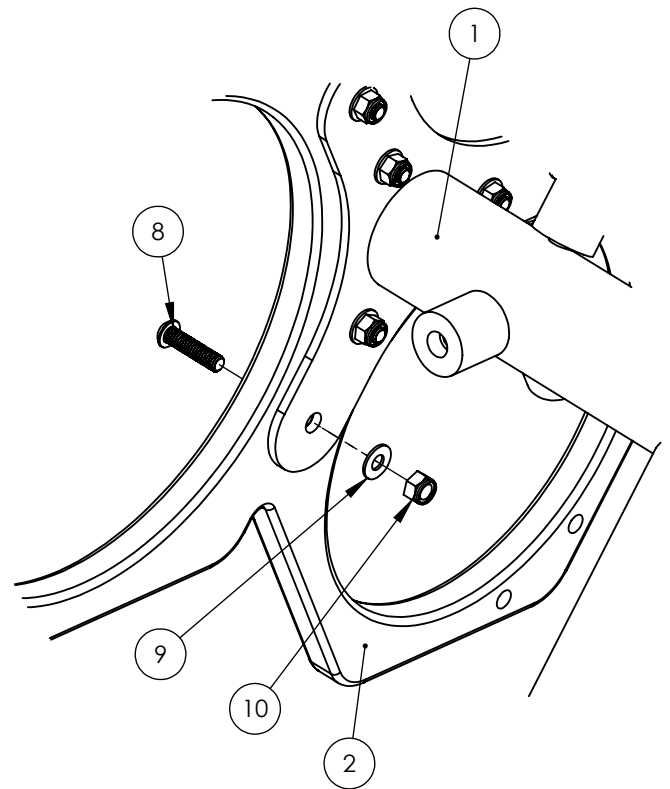
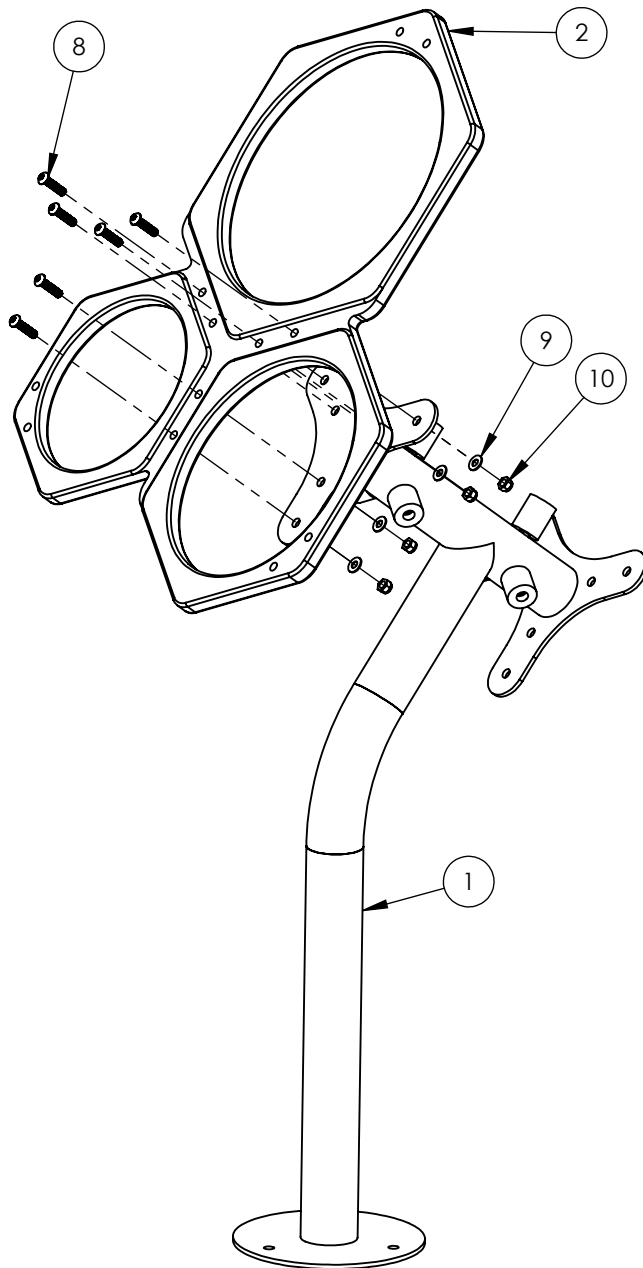
NOTES: 3 DISTINCT TONES; LOW TO HIGH
TIMBRE: PERCUSSIVE
RANGE: BARITONE
DRUM BODY: LLDPE
DRUM CAP: ACRYLIC ALLOY
FRAME: HDPE
POST: POWDER COAT STEEL
SPACERS: LDPE
HARDWARE: STAINLESS STEEL



HONEYCOMB CONGAS BASE COMPONENTS (HCC-BOM)			
ITEM NO.	PART NUMBER	DESCRIPTION	QTY.
1	HCC-POST-ASSY	HONEYCOMB CONGA POST ASSEMBLY	1
2	HCC-FRAME-TOP	HONEYCOMB FRAME TOP	1
3	HCC-FRAME-BOTTOM-SCREEN	HONEYCOMB FRAME BOTTOM WITH SCREENS	1
4	TD-EL-HCC-8-WC	8" ELEVATED TUNED DRUM CYLINDER, 17" LG. WITH CAP	1
5	TD-EL-HCC-10-WC	10" ELEVATED TUNED DRUM CYLINDER, 18" LG. WITH CAP	1
6	TD-EL-HCC-12-WC	12" ELEVATED TUNED DRUM CYLINDER, 19" LG. WITH CAP	1
7	HCC-BRACE	HONEYCOMB CONGA BRACE	3
8	HWB0366	BOLT - 5/16"-18 X 1-1/4" TORX BUTTON HEAD SS	24
9	HWWR0103	WASHER 5/16" ID X 11/16" OD X .05 THICK FLAT 316SS	12
10	HWN0136	NYLON LOCK NUT - 5/16" SS	24
11	HWWR0075	WASHER - 3/8" X 1" USS FLAT - 316SS	6
12	HWB0273	BOLT - 3/8"-16 X 1" HEX HEAD SS	2
13	HWB0285	BOLT - 3/8"-16 X 1-1/4" HEX HEAD SS	2
14	HWB0218	BOLT - 3/8"-16 X 1-1/2" HEX HEAD SS	2

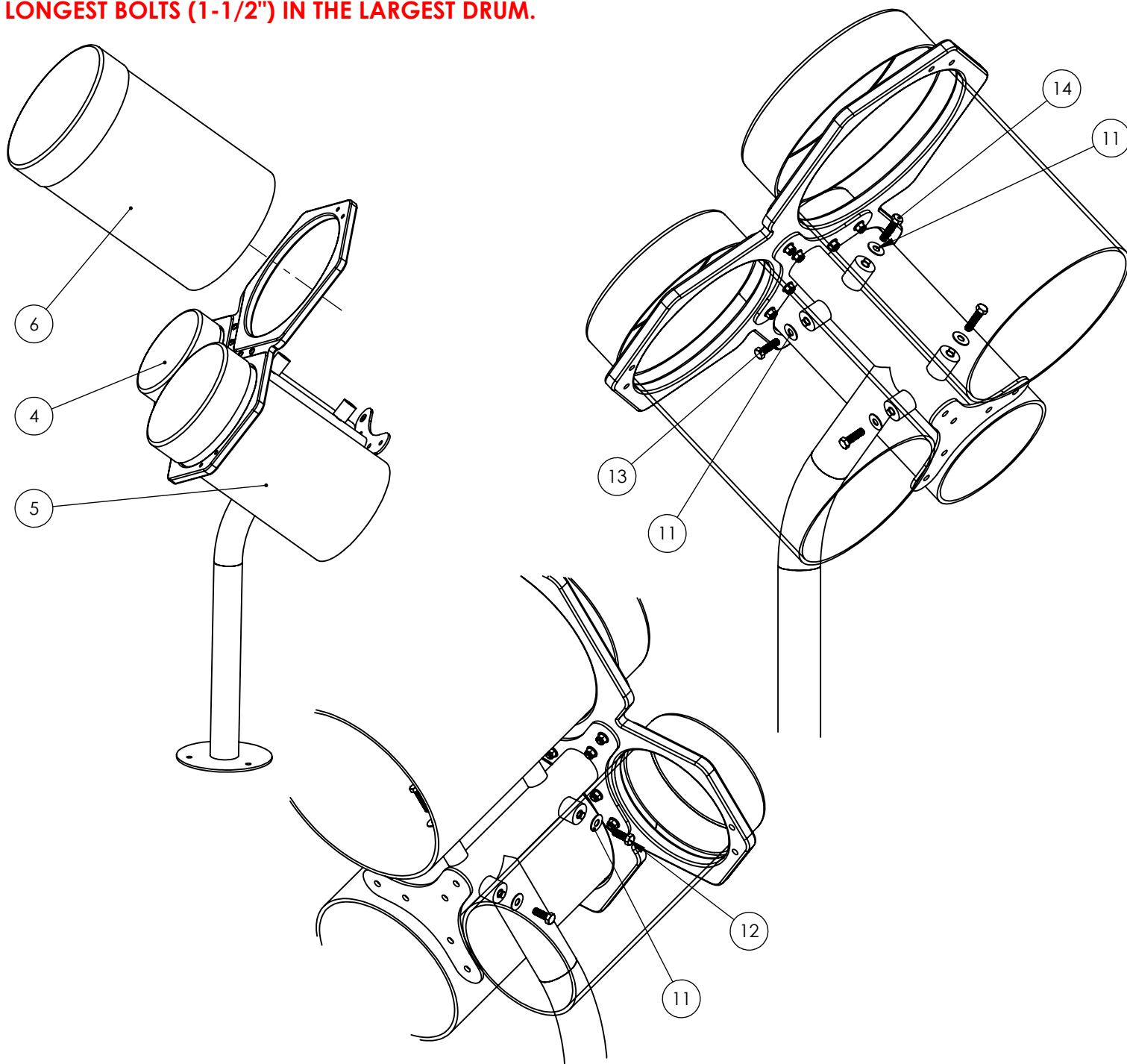
MOUNTING VARIANTS					
ITEM NO.	PART NUMBER	DESCRIPTION	IG	SM	PM
15	HCC-BOM	HONEYCOMB CONGAS BASE COMPONENTS	1	1	1
16	POST-STL-IG-EXT-FP	IN GROUND STEEL POST EXTENSION (POWDER-COATED)	1	-	-
17	92240A624	3/8"-16 HEX HEAD SCREW, 1"LG. SS	3	-	-
18	HWN0098	NUT 3/8" - NYLOCK 300 S/S	3	-	-
19	POW 07315	3/8"-16 WEDGE EXPANSION ANCHOR, 3.75"LG. SS	-	3	-
20	9267K43	35/64" HEX NUT CAP	-	3	-
21	MUSH-PM-PS	MUSHROOM - HDPE PORTABLE STAND (1" BLACK)	-	-	1
22	HWN0095	3/8"-16 HEX NUT, SS	-	-	3
23	91185A867	3/8"-16 THUMB SCREW, 1"LG. SS	-	-	3

ATTACH THE FRONT FRAME PIECE TO THE POST, WITH THE BLACK DETENTS FACING FORWARD AND THE LARGEST OPENING ON TOP, USING (6X) 5/16" BUTTON HEAD BOLTS, WASHERS, AND LOCK NUTS. NOTE THE WASHER'S POSITION ON THE BACKSIDE BETWEEN THE POST AND THE LOCK NUT. HAND TIGHTEN FOR NOW.

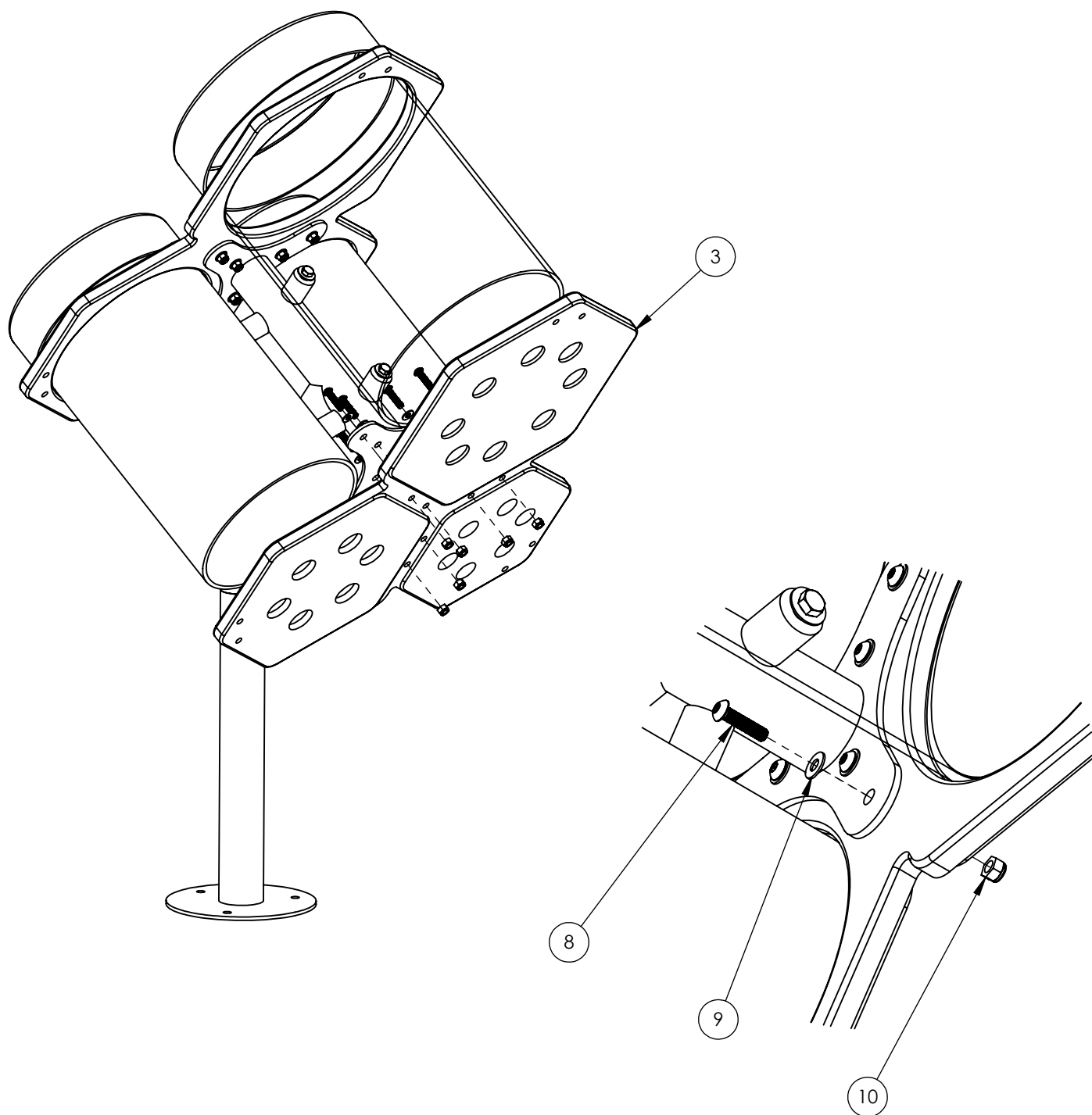


SLIDE THE DRUM BODIES INTO THE CORRESPONDING OPENINGS IN THE FRAME, CAPS FACING FORWARD. ALIGN THE PRE-DRILLED HOLES IN THE DRUM BODIES TO THE THREADED SUPPORTS ON THE POST. ACCESSING THROUGH THE BOTTOM OF THE DRUMS, USE A 9/16" SOCKET WRENCH TO ATTACH USING (6) 3/8" HEX HEAD BOLTS WITH (6) 3/8" WASHERS PLACED BETWEEN THE BOLT HEADS AND THE INNER SURFACE OF THE DRUMS.

NOTE: 3 DIFFERENT LENGTHS OF HEX HEAD BOLTS ARE PROVIDED. USE THE SHORTEST BOLTS (1") IN THE SMALLEST DRUM, THE MEDIUM LENGTH BOLTS (1-1/4") IN THE MEDIUM DRUM, AND THE LONGEST BOLTS (1-1/2") IN THE LARGEST DRUM.

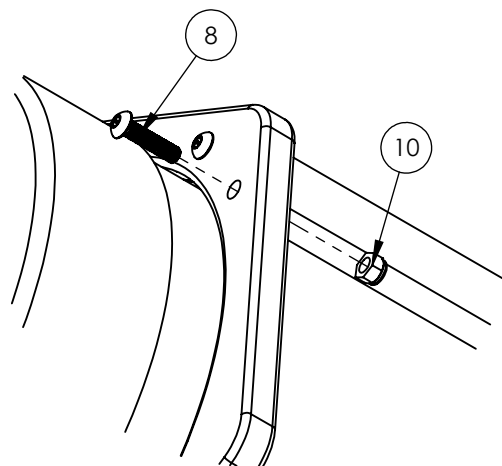
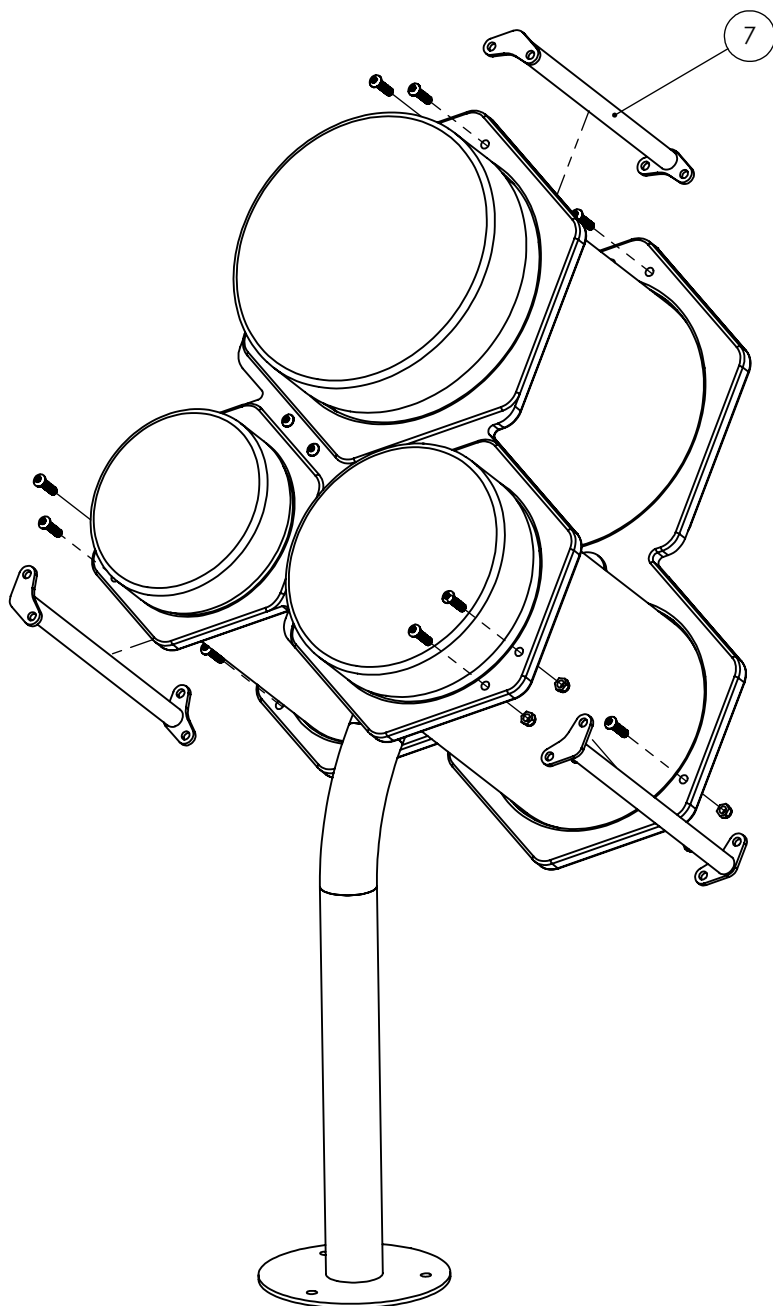


WITH THE RECESSED MESH SURFACES FACING THE BOTTOM OF THE DRUMS, ATTACH THE BOTTOM FRAME PIECE TO THE POST USING (6) 5/16" X 1-1/4" LONG BOLTS, WASHERS, AND LOCK NUTS. NOTE THE POSITION OF THE WASHER BETWEEN THE BOLT HEAD AND POST. THE DRUM CYLINDERS SHOULD FIT INTO THE RECESSED AREAS ALLOWING THE FRAME PIECE TO FIT FLUSH TO THE POST. HAND TIGHTEN FOR NOW.

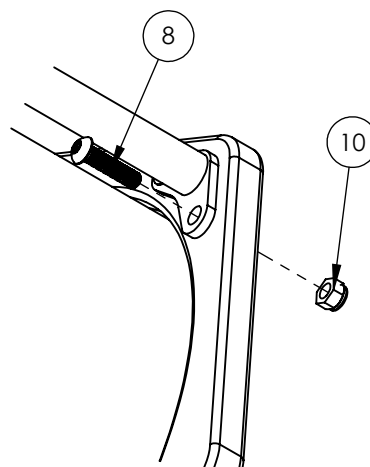


INSTALL THE (3) BRACE PIECES IN BETWEEN THE TOP AND BOTTOM FRAMES USING (12) 5/16" X 1-1/4" LONG BOLTS AND (12) LOCK NUTS. ONCE ALL BRACES ARE FITTED, FULLY TIGHTEN ALL NUTS, ENSURING THREADS EXTEND INTO THE LOCKING PORTION.

BE SURE TO GO BACK AND FULLY TIGHTEN NUTS ATTACHING BOTH FRAME PIECES TO THE POST USING 1/2" SOCKET WRENCH AND PROVIDED T40 HAND KEY.

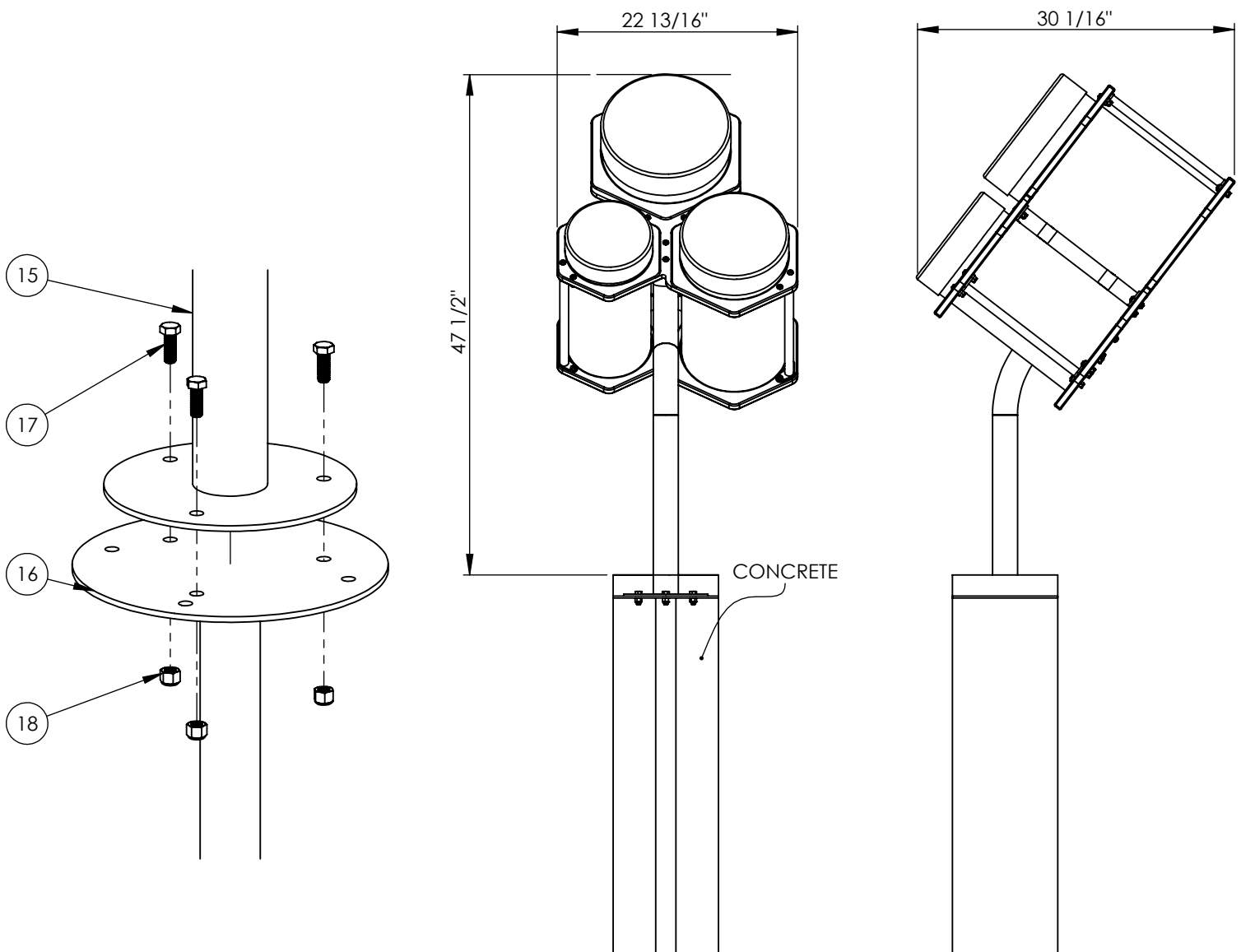


TOP ATTACHMENT

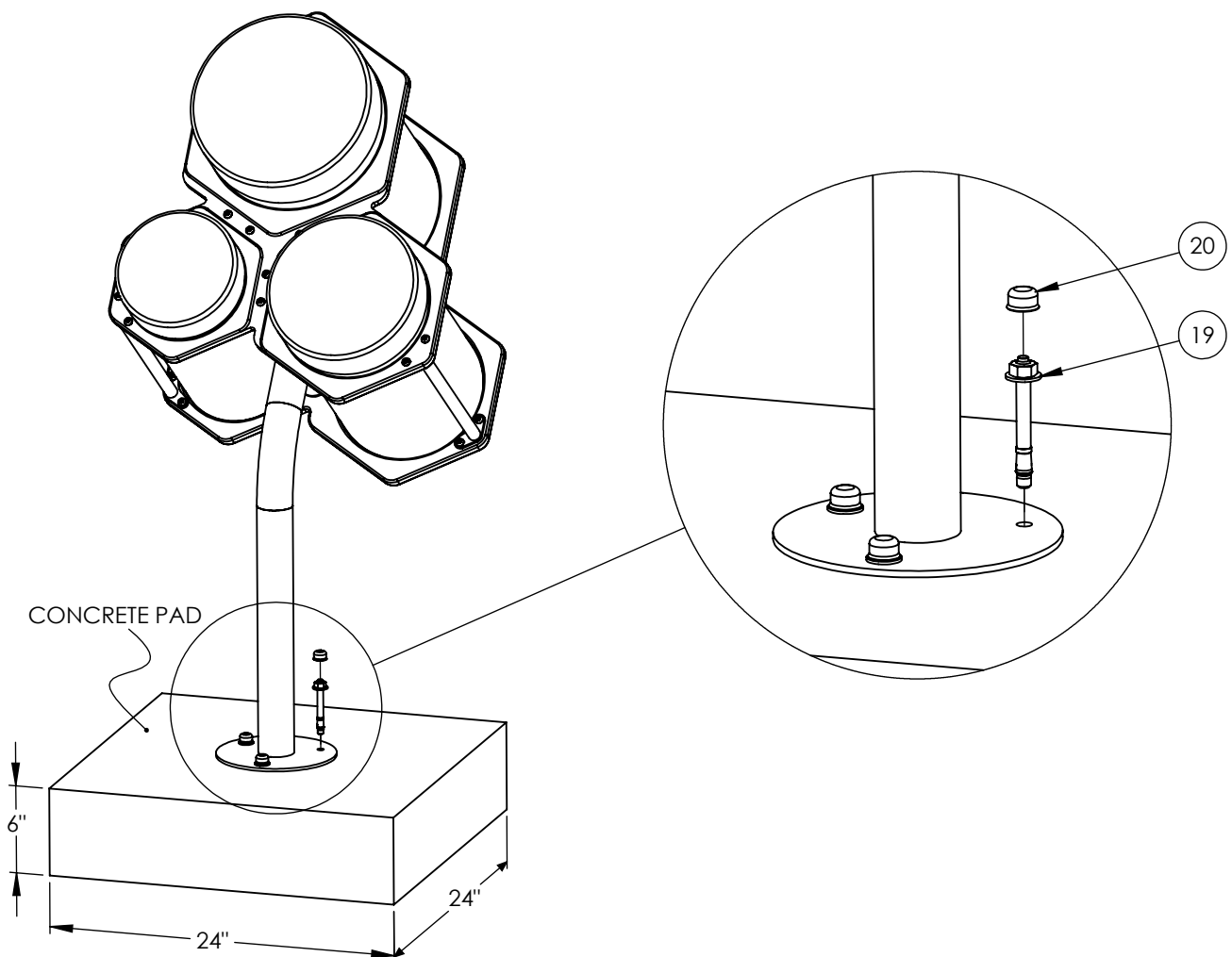


BOTTOM ATTACHMENT

1. Attach the Instrument to the In Ground Post Extension by aligning the holes on it to those at the base of the instrument post and fastening them together with (3) 3/8" x 1" long Hex Head Screws and (3) 3/8"-16 Nylock Hex Nuts. Ensure there is no wobble or movement between the post and the extension.
2. Excavate one 10" diameter hole, 36" deep, at the installation location. Check for sufficient clearance around the Instrument, a 36" perimeter around the Instrument is recommended for wheelchair accessibility.
3. With two people, lower the post with post extension attached into the excavated hole. Verify correct placement and levelness.
4. Lastly, pour concrete around the In Ground Extension. If necessary, brace the post to hold it rigid while the concrete cures. Leave to set according to the concrete manufacturers guidelines. Approximately (3) 80lb. bags will be needed.



1. Determine installation location. Verify concrete pad is a minimum of 24" long x 24" wide x 6" thick. If the concrete pad is at an angle, steel washers are required to act as shims (Shims not provided). If there is not already an existing pad, approximately (4) 80lb. bags will be needed. Allow concrete to cure per concrete manufacturers guidelines.
2. With two people place the Instrument Assembly onto the concrete pad and mark the center of the holes on the surface mount base. After you have made your marks, set aside the Instrument in order to drill for anchor holes. With a hammer or rotary drill, drill through concrete at marked locations. Drill to a minimum depth of 4". A 3/8" masonry drill bit will be needed.
3. Place the Instrument back over the drilled out holes. Insert provided anchor bolts into aligned holes. Position anchor nut so that it is flush with the top of the bolt. Pound anchor bolts into the hole until the anchor washer is flush with the surface mount base. Tighten anchor bolts until they are snug. Cover remaining bolt sections with provided nut caps.
4. Verify the correct placement, levelness, and finished height of the Instrument. Check for sufficient clearance around the Instrument, a 36" perimeter around the Instrument is recommended for wheelchair accessibility.
5. If installing onto wet concrete, us the wet set anchor manufacturers guidelines for installation procedures.



1. With two people have one situate the instrument onto the portable stand and align the holes.
2. Have the second person secure the instrument to the portable stand with the provided 3/8"-16 thumb screws. Thumb screws should be tightened snugly to prevent any raddling during play. The 3/8"-16 Hex Nuts are prepressed into the Portable Stand from the Factory.

